



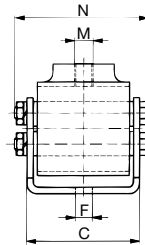
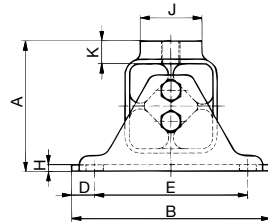
## Anti-vibration Mounting

## Type V

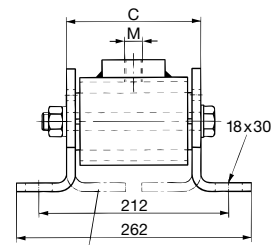
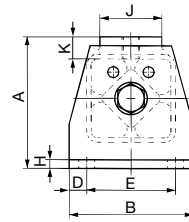


Multi-directional mount for compression, tension and shear loading

Type V 15-45



Type V 50



Alternativ mounting position

| Art. No.   | Type | Load in N on axes X÷X; Z÷Z | A   | B   | C   | D    | E   | ØF   | M   | N    | H   | ØJ | K    | Weight in kg |
|------------|------|----------------------------|-----|-----|-----|------|-----|------|-----|------|-----|----|------|--------------|
| 05 011 001 | V 15 | – 800                      | 49  | 80  | 51  | 12.5 | 55  | 9.5  | M10 | 58.5 | 3   | 20 | 10   | 0.30         |
| 05 011 002 | V 18 | 600 – 1600                 | 66  | 100 | 62  | 12.5 | 75  | 9.5  | M10 | 74   | 3.5 | 30 | 13   | 0.70         |
| 05 011 003 | V 27 | 1300 – 3000                | 84  | 130 | 73  | 15   | 100 | 11.5 | M12 | 85.3 | 4   | 40 | 14.5 | 1.25         |
| 05 011 004 | V 38 | 2600 – 5000                | 105 | 155 | 100 | 17.5 | 120 | 14   | M16 | 117  | 5   | 45 | 17.5 | 2.45         |
| 05 011 005 | V 45 | 4500 – 8000                | 127 | 190 | 122 | 25   | 140 | 18   | M20 | 148  | 6   | 60 | 22.5 | 4.64         |
| 05 011 006 | V 50 | 6000 – 12000               | 150 | 140 | 150 | 20   | 100 | –    | M20 | 262  | 10  | 70 | 25   | 7.46         |

The max. load on Y÷Y axes is 10% from Z÷Z and X÷X axes.  
Momentary shock loads of 2.5 g in Z÷Z and X÷X axes are admissible.

### Applications

For active and passive isolation of vibrations and damping of solid-borne noise transmission in crushing plants, compressors, blowers, pumps, rotary converters, generators, mills, crane track supports, etc.

For installation guidelines see →



Fig. a



Fig. b

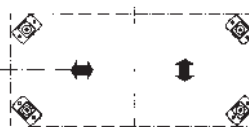


Fig. c

Fig. a) Dynamic forces longitudinal

Fig. b) Dynamic forces lateral

Fig. c) Dynamic forces undeterminant

