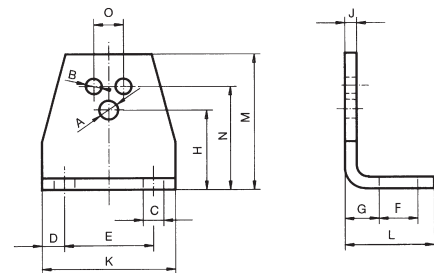




Rubber Suspension Unit

Accessories

Bracket Type WS



Art. No.	Type	fit for		A	B	C	D	E	F	G	H	J	K	L	M	N	O	Weight in kg
		SE-	DR-A, ...															
06 590 001	WS 11-15	11	15	6.5	5.5	7	7.5	30	13	11.5	27	4	45	30	46	35	10	0.08
06 590 002	WS 15-18	15	18	8.5	6.5	7	7.5	40	13	13.5	34	5	55	32	58	44	12	0.15
06 590 003	WS 18-27	18	27	10.5	8.5	9.5	10	50	15.5	16.5	43	6	70	38	74	55	20	0.28
06 590 004	WS 27-38	27	38	12.5	10.5	11.5	12.5	65	21.5	21	57	8	90	52	98	75	25	0.70
06 590 005	WS 38-45	38	45	16.5	12.5	14	15	80	24	21	66	8	110	55	116	85	35	0.90
06 590 006	WS 45-50	45	50	20.5	12.5	18	20	100	30	26	80	10	140	66	140	110	40	1.80

Bore A is designed for the fixation of the ROSTA tensioner devices type SE. Bores B are designed for the fixation of the ROSTA rubber suspension units type DR-A, DK-A, DO-A.