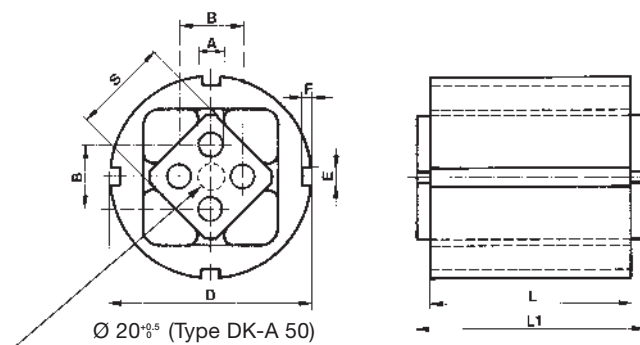
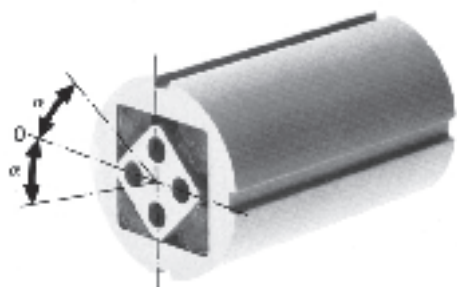


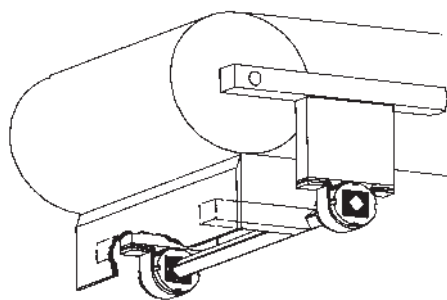


Rubber Suspension Unit

Type DK-A



Art. No.	Type	L	L1 ^{-0.3}	A ^{+0.5}	B	D	E	F	S	Torque M in Nm at ↯ α						Weight in kg
										5°	10°	15°	20°	25°	30°	
01 071 001	DK-A 15 x 25	25	30	5	10 ^{±0.2}	36 ^{+0.3}	5	2.5	15	0.7	1.6	2.6	4.0	5.7	8.2	0.05
01 071 002	DK-A 15 x 40	40	45	5	10 ^{±0.2}	36 ^{+0.3}	5	2.5	15	1.1	2.5	4.2	6.4	9.2	13.2	0.08
01 071 003	DK-A 15 x 60	60	65	5	10 ^{±0.2}	36 ^{+0.3}	5	2.5	15	1.6	3.8	6.3	9.6	13.8	19.8	0.12
01 071 004	DK-A 18 x 30	30	35	6	12 ^{±0.3}	45 ^{+0.4}	5	2.5	18	1.9	4.5	7.5	11.0	15.0	20.6	0.10
01 071 005	DK-A 18 x 50	50	55	6	12 ^{±0.3}	45 ^{+0.4}	5	2.5	18	3.2	7.5	12.5	18.3	25.0	34.4	0.16
01 071 006	DK-A 18 x 80	80	85	6	12 ^{±0.3}	45 ^{+0.4}	5	2.5	18	5.1	12.0	20.0	29.3	40.0	55.0	0.26
01 071 007	DK-A 27 x 40	40	45	8	20 ^{±0.4}	62 ^{+0.5}	6	3	27	4.7	10.7	17.5	26.9	39.5	57.0	0.25
01 071 008	DK-A 27 x 60	60	65	8	20 ^{±0.4}	62 ^{+0.5}	6	3	27	7.0	16.0	26.3	40.3	59.3	85.5	0.37
01 071 009	DK-A 27 x 100	100	105	8	20 ^{±0.4}	62 ^{+0.5}	6	3	27	11.7	26.7	43.8	67.2	98.8	142.5	0.62
01 071 010	DK-A 38 x 60	60	70	10	25 ^{±0.4}	80 ^{+0.6}	7	3.5	38	13.0	30.4	50.6	78.0	113.0	162.0	0.63
01 071 011	DK-A 38 x 80	80	90	10	25 ^{±0.4}	80 ^{+0.6}	7	3.5	38	17.3	40.5	67.5	104.0	151.0	216.0	0.83
01 071 012	DK-A 38 x 120	120	130	10	25 ^{±0.4}	80 ^{+0.6}	7	3.5	38	26.0	60.8	101.2	156.0	226.0	324.0	1.22
01 071 013	DK-A 45 x 80	80	90	12	35 ^{±0.5}	95 ^{+0.8}	8	4	45	27.6	62.4	104.0	160.0	222.0	320.0	1.15
01 071 014	DK-A 45 x 100	100	110	12	35 ^{±0.5}	95 ^{+0.8}	8	4	45	34.5	78.0	130.0	200.0	278.0	400.0	1.44
01 071 015	DK-A 45 x 150	150	160	12	35 ^{±0.5}	95 ^{+0.8}	8	4	45	51.8	117.0	195.0	300.0	420.0	600.0	2.12
01 071 016	DK-A 50 x 120	120	130	M12x40	40 ^{±0.5}	108 ⁺¹	8	4	50	51.0	133.0	250.0	395.0	570.0	780.0	2.35
01 071 017	DK-A 50 x 200	200	210	M12x40	40 ^{±0.5}	108 ⁺¹	8	4	50	102.0	260.0	475.0	745.0	1070.0	1460.0	3.75
01 071 018	DK-A 50 x 300	300	310	M12x40	40 ^{±0.5}	108 ⁺¹	8	4	50	150.0	385.0	700.0	1100.0	1590.0	2160.0	5.60



Fixation by Clamp Type BK

The fixation of the outer housing by means of the standardized clamp type BK makes the continuous and individual pretension of the unit in both directions easy and adjustable (clamp type BK on page 27).