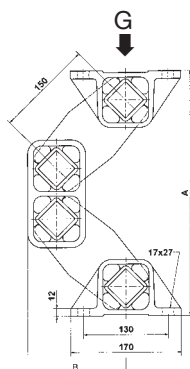
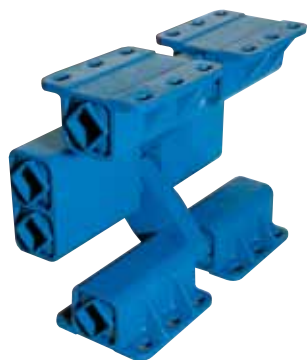
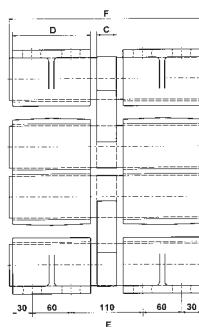


## Oscillating Mounting

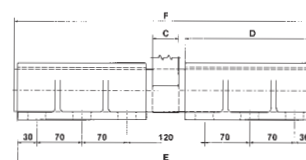
## Type AB TWIN



AB 50 TWIN



AB 50-2 TWIN

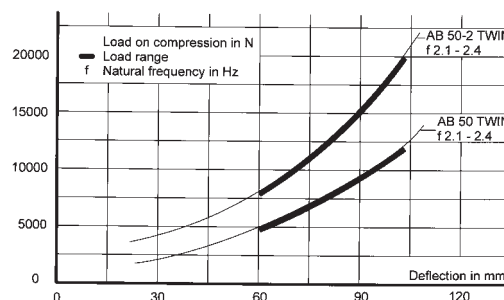


Art. No.	Type	G	A un-loaded	A max. load	B un-loaded	B max. load	C	D	E	F	Weight in kg
07 051 008	AB 50 TWIN	5000 – 12 000	380	280	150	180	30	120	290	300	35
07 051 009	AB 50-2 TWIN	8400 – 20 000	380	280	150	180	40	200	460	470	54

G = load capacity in N per mount

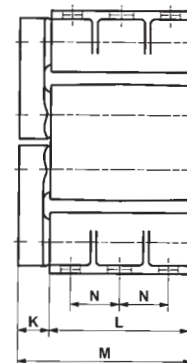
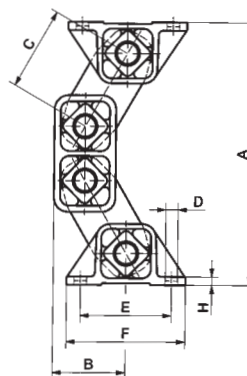
$c_d$	AB 50 TWIN	AB 50-2 TWIN
vertical	380	640
horizontal	170	280

$c_d$  = dynamic spring value in N/mm, in nominal load range at  $n_{err} = 960 \text{ min}^{-1}$ ,  $sw = 8 \text{ mm}$



## Oscillating Mounting

## Type AB-HD



Art. No.	Type	G	A un-loaded	A max. load	B un-loaded	B max. load	C	D	E	F	H	K	L	M	N	Weight in kg
07 051 060	AB-HD 50-2	6000 – 14000	376	311	104	141	120	17x27	130	170	12	45	200	250	70	35.5

G = load capacity in N per mount

$c_d$	AB-HD 50-2
vertical	359
horizontal	277

$c_d$  = dynamic spring value in N/mm, in nominal load range at  $n_{err} = 960 \text{ min}^{-1}$ ,  $sw = 8 \text{ mm}$

